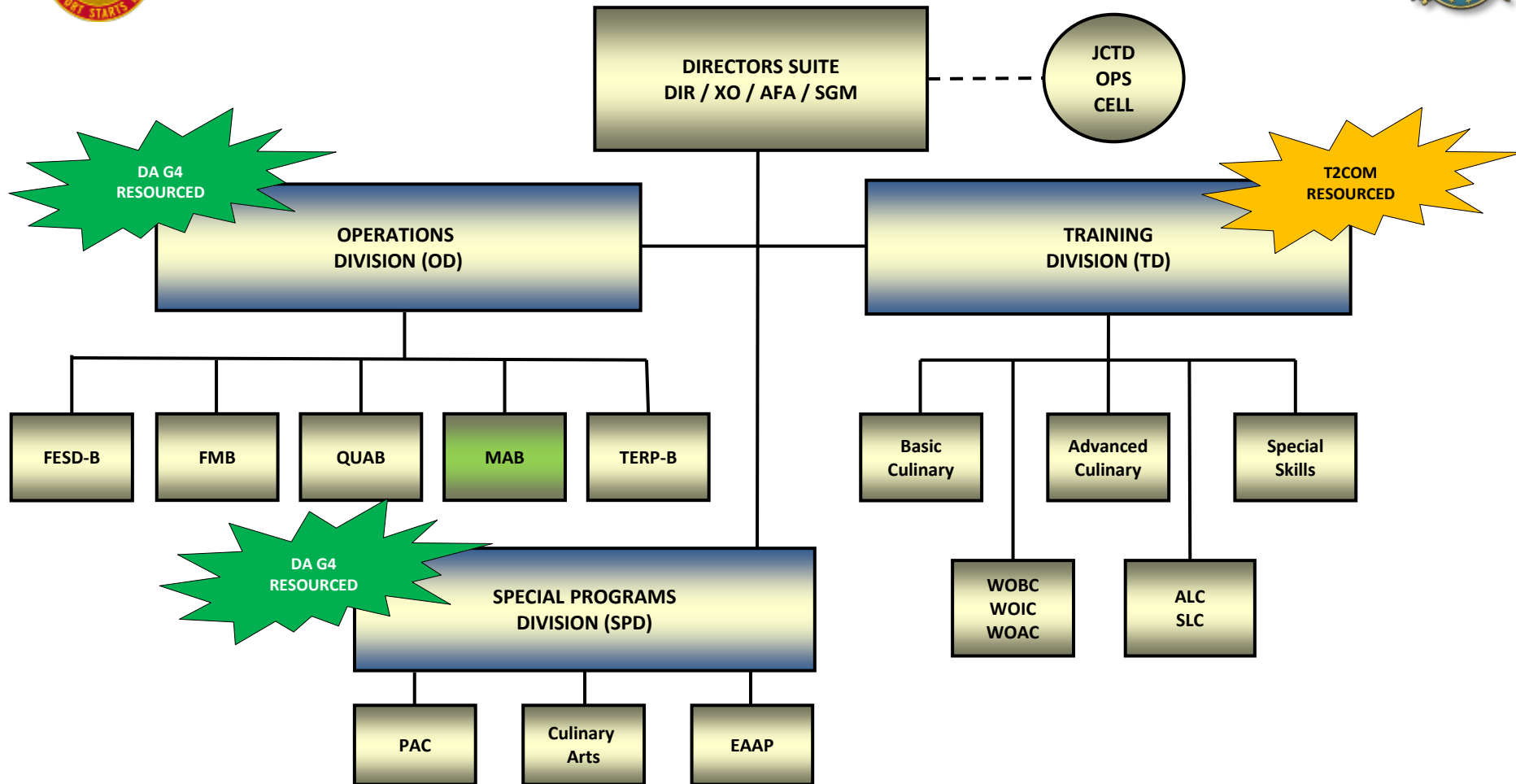




Joint Culinary Training Department Organizational Structure



Legend

- FESD-B - Facilities, Equipment, Standardization and Design Branch
- FMB - Futures and Modernization Branch
- QUAB - Quality Assurance Branch
- MAB - Management Assistance Branch (MAB) – *SMs Only Branch*
- TERP-B - Training, Equipment, Rations, and Policy Branch
- PAC – Philip A. Connelly
- EAAP – Enlisted Aide Apprenticeship Program
- WOBC – Warrant Officer Basic Course
- WOIC – Warrant Officer Intermediate Course
- WOAC – Warrant Officer Advance Course
- SLC – Senior Leader Course
- ALC – Advanced Leader Course